

RAIDER II XTREME

High-Performance PASSPORT® Trunking With Data



The **Raider II Xtreme** is a full functioning single site PassPort trunking controller that offers fleet owners the ability to track their vehicles using Trident's unique TrAVL AVL system. With the addition of data, the system owner can offer AVL and text messaging capabilities within a single site PassPort system. Fleet owners can access and download the vehicle location data as often as necessary by accessing Trident's TrAVL web site or their own server running the TrAVL application.

The Raider II Xtreme allows PassPort, data-enabled mobile radios to coexist with voice on the same channel without the risk of collision. Remote access to the controller is achieved by telephone line via Tuff-Modem or Ethernet by using Trident's ES-2 Ethernet to serial converter.

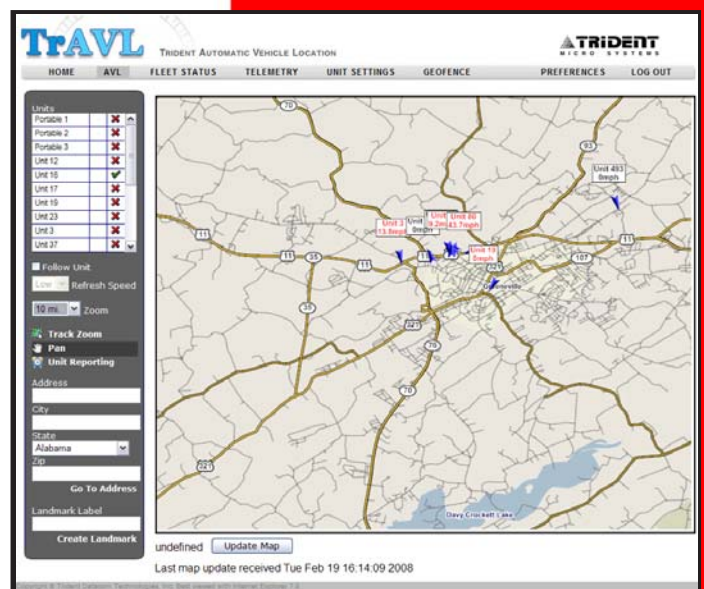
Voice airtime accounting data can be downloaded using the XMODEM protocol for error free transmission. This transfer procedure will copy the accrued airtime onto a computer disk ready for customer invoice processing. Dual passwords help protect the Raider II Xtreme from unauthorized access.

Multiple Raider II Xtreme units may reside in the same system with data units homed on each individual Raider II Xtreme channel. Each Raider II Xtreme will need a connection to its Data I/O Port.

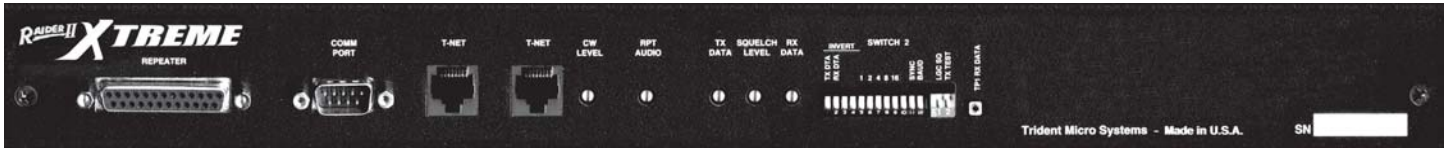
Features:

- TrAVL AVL and Text Messaging
- PassPort Enhanced Trunking Protocol
- Dispatch Trunking

- Up to 20 Channels Per Site
- Automatic Radio Registration
- Automatic Radio De-registration
- Radio Stun and Kill Capability
- Selective Call (optional)
- Airtime Logging
- Easy Installation



RAIDER II XTREME



PN 850-008

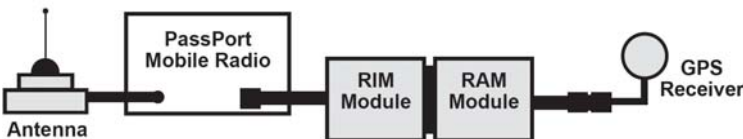
Features:

Data Collection – The Raider II Xtreme is a fully functioning single site PassPort® controller that has been enhanced with the Trident Data capability. Additionally, it acts as the data extraction point, where data is taken from the system and fed to the server.

The Raider II Xtreme comes bundled with Trident's unique TrAVL Bridge software, which manages the connection to the site regardless of connection type. The TrAVL Bridge supports direct serial connection, serial connection via dial-up modem, or serial connection via Ethernet to serial converters such as the Trident ES-2. All data collected by the TrAVL Bridge is then transported to either the TrAVL Server via the Internet, or to your own private server.

Voice and Data — The Raider II allows for total voice communications as well as data transport on the same channel on a shared basis. When the channel is polling data subscribers it merely appears busy to other units on that channel.

Mobile Components consist of the RIM Module, the RAM Module, and the GPS Antenna/Receiver.



4000 ID Codes - The User Registry in the Raider Xtreme supports up to 4,000 entries consisting of MIN and Group IDs.

CWID - Morse code identifier supported with the capability of programming a separate Call Sign on a per channel basis.

Easy Interface - Test switch provided for tuning and alignment. All level adjustments, test points and dip switches are readily accessible on rear panel.

Fade Timer - User-programmable fade timer enables the channel to remain active, should there be a momentary loss of PassPort data during decode at the repeater site.

Half or Full Duplex Operation - Supports half or full duplex mobile operations.

System Management - Password protected modem support for transference of logged airtime and system configuration.



Two Trident Drive, Arden, NC 28704

(828) 684-7474 • (800) 798-7881 • Fax (828) 684-7874

www.tridentms.com

Repeater Disable - Trident's exclusive Repeater Disable feature helps to protect co-channel users from interference by "locking-out" the affected channel during the time it is being used by another repeater or system. This is especially useful in UHF trunking applications.

Specifications:

Repeater Interface

Discriminator Input	50mV to 1 Volt
TX Audio Output	0 to 2 Volts Peak to Peak
TX Data Output	0 to 2 Volts Peak to Peak
PTT Output	Open Drain FET 200mA

Comm Port Interface

Baud Rate	1200 or 2400 Baud
Interface Type	DB-9 DTE

Data Bus Interface

T-NET	Proprietary Differential Data Bus
-------	-----------------------------------

Electrical

Power Supply	11 to 15 Volts DC @ 750mA
--------------	---------------------------

Environmental

Operating Temperature	-40° to 60° C
Humidity	90% non-condensing

Physical

Size	1.75"H x 19"W x 6"D
Mounting	19" Rack with Adjustable Ears
Weight	3.0 lbs.



Tuff-Modem

Ideal for
Raider II Xtreme
PN 300-234

Features

- Baud rates of 1200 or 2400
- Answers incoming calls automatically
- Custom Micro Controller with Watch Dog
- Front panel LEDs indicate status
- RS-232 serial DB-25 female connector